



robust^{AI}

Collaborative productivity
is within reach

DHL Innovation Center

May 2025



The background of the slide is a blue-tinted photograph of a large warehouse interior. It shows long aisles of high industrial shelving units filled with boxes. Several people are visible working in the aisles, and a forklift is parked in the distance.

Company & Product Overview

DHL WAREHOUSE

6:30 AM



Founding & Leadership Team - Pioneers in Robotics



Anthony Jules
CEO, Co-Founder



Rodney Brooks
CTO, Co-Founder



Stasy Pasterick
CFO



Benjie Holson
VP, Software



Leila Takayama
VP, HRI & Design



Justine Rembisz
VP, Hardware



Sola Lawal
VP Customer Success



Ben Gruettner
VP of Revenue



Gabrielle Halberg
VP of Product



Nick Costides
Former President of IT,
UPS
ADVISOR



Henrik Christensen
Co-Founder, Leader of U.S.
Robotics Roadmap
ADVISOR



How do you raise the bar on what it means for robots to be **collaborative** with warehouse workers?



CarterTM

A novel form of mobile robot that allows for seamless collaboration with people across picking, putaway and value added service.

Fully **Autonomous**.

Truly **Collaborative**.

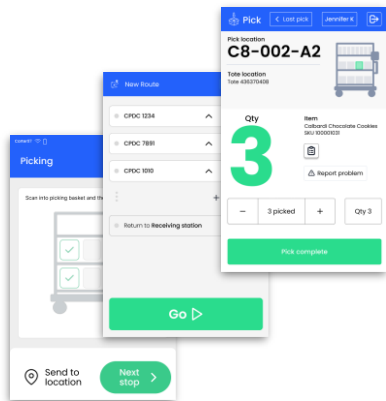
Our solution

An integrated Robotic Hardware & Software solution

Carter

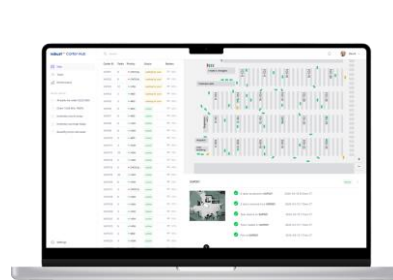


Collaborative
mobile robot

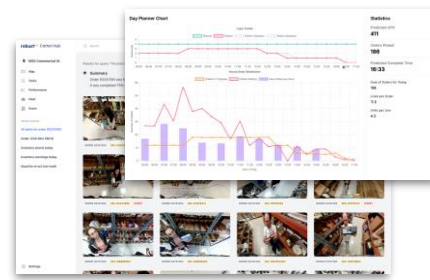


Flexible applications for
fulfillment workflows

Carter Hub



Fleet
Management &
Optimization



AI Insights
& Addons



Accuracy & Speed: Leveraging Put-to-Light



Increased Orders Per Cart

Light directed putting allows removes the concern of misplacement, allowing a denser pick cart to drive efficiency gains



Reduced Seek Time

Reduce the amount of time spent searching for the right order tote



Industry Leading Accuracy

Reduce picking errors by ensuring the right product lands in the right tote



Intuitive UI Guiding Actions

Large, robot mounted screen directs the picker through every step, as well as highlighting the right tote to place into

One platform, many workflows

Robust.AI's **scalable** workflows gives your warehouse the **flexibility** it needs.

01 Guided

Deployed for small systems and opportunistically used in fast pick areas, this option allows for speed, scale, and versatility across a wide customer base.

03 Cascade

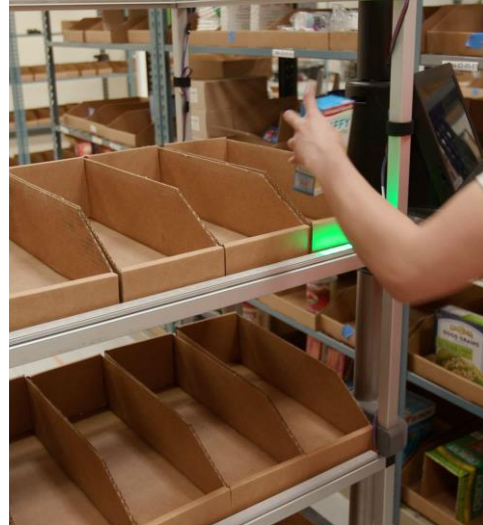
The standard flow for most customers, Cascade is a cluster pick that allows for autonomy, speed, high pick density, and minimal travel.

02 Batch & Sort

Used advantageously for the right operation, the Carter hardware serves not only as the pick engine, but also the sorting infrastructure bringing tremendous efficiency with great flexibility.

04 Zone Surge

Similar to the Cascade option, Carters and pickers move in similar manners, but here pickers are allocated to a zone. This can be advantageous for large footprint layouts.





Day-1 Efficiency Improvement Results

What it means for your business

50%

Productivity Gains
In highly optimized
environments

2-3x

Productivity Gains
In less optimized
environments

Carter

Spatial sensing and perception

Camera-based vSLAM (no LIDAR)
360° machine-vision system
Optimized for AI data collection

Field configurable shelving with
put-to-light LED system allows
for faster order tote seek time

Patented holonomic drive allows
instant movement in any direction
that translates to the robot
navigating as efficiently as
possible to the next location



High visibility marquees help **improve**
inventory seek time

Touch screen with barcode scanner
allows for **hands free picking** for
obtaining inventory and simple visual
directions for provide additional
productivity improvements

Force-sensing handlebar for single-
handed operation

Carter's Hardware Design & Features
helps impact productivity in the core
areas of:

Inventory Seek
Obtaining Inventory
Order Tote Seek



robust^{AI}

Collaborative productivity
is within reach

THANK YOU



Main Contact

Anthony Jules
anthony@robust.ai



HQ Address

1050 Commercial St
San Carlos, CA 94070



Website

robust.ai

