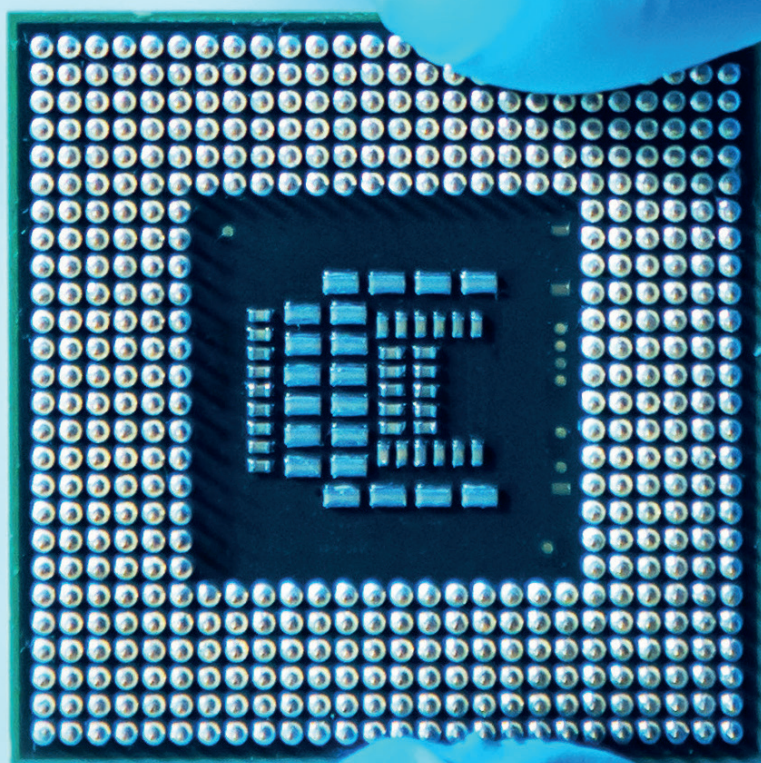




SEMICONDUCTOR SUPPLY CHAINS.

OUR SOLUTION FOR YOUR BUSINESS.

DHL Global Forwarding – Excellence. Simply Delivered.



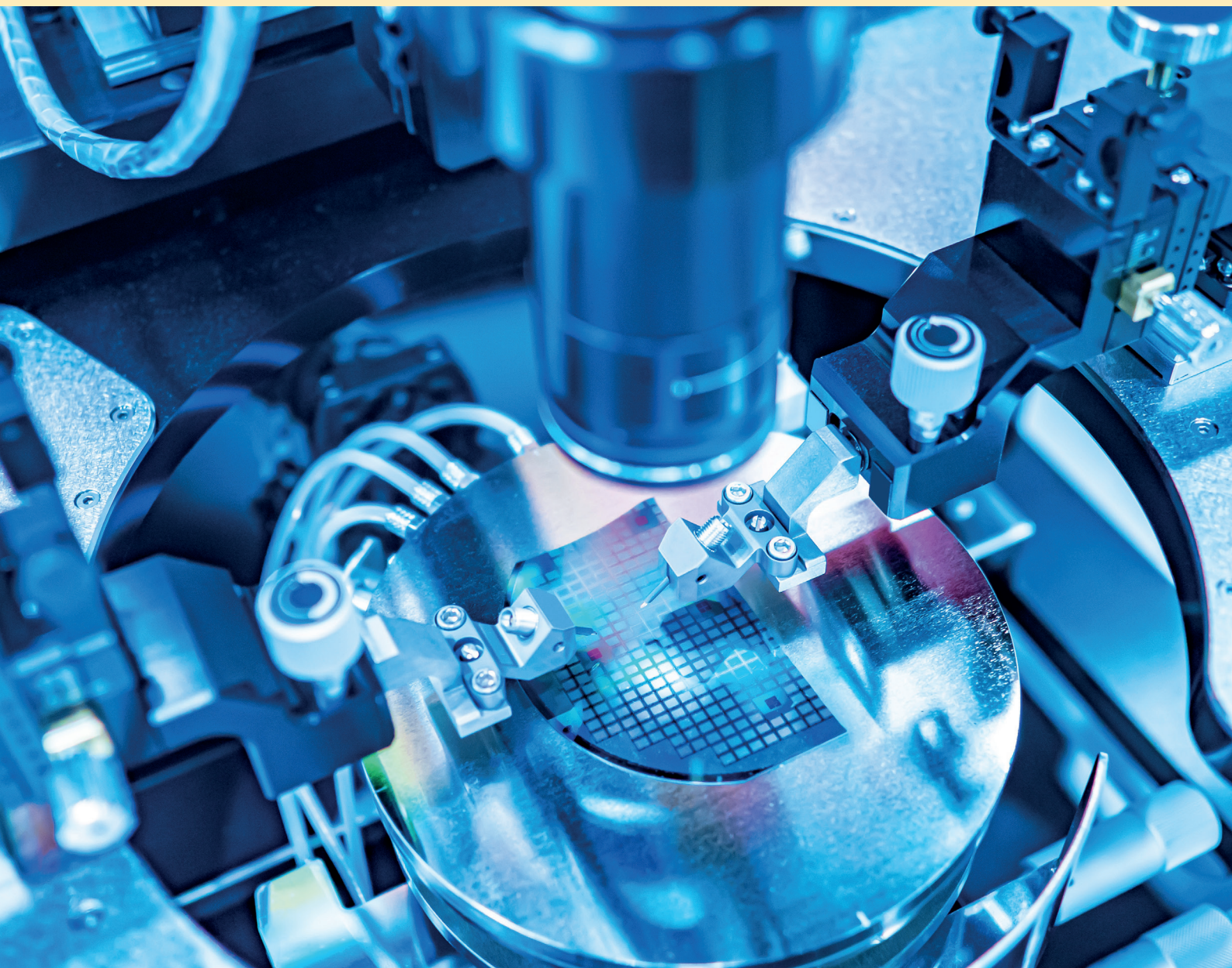
THE SEMICONDUCTOR SUPPLY CHAIN CHALLENGE

TINY TECH, HUGE IMPACT

In recent years, semiconductors have become the nerve centers that power modern electronics. And as a result, market demand for them has been growing – fast.

The range of items within the semiconductor supply chain is as broad as it is complex. From the smartphones in our hands to large-scale industrial equipment, all modern electronics are powered by semiconductor technology. And with the raw materials used to make them travel around the world – sometimes as far as 25,000 miles – before being turned into a finished product, increased demand means increased strain on the supply chain.

The sheer complexity of the semiconductor supply chain is a challenge for businesses and manufacturers across all sectors. How can you keep up with rising demand in this high value market, particularly in the face of complex global supply chain setups?



FUTURE PROOFING YOUR SEMICONDUCTORS SUPPLY CHAIN

Responding to these challenges requires a highly resilient supply chain that supports the forwarding of everything from raw materials to a broad range of complex and highly sensitive semiconductor products and capital equipment.

Your challenges

- Smaller chips (node) need bigger machines
- Short turn-around time for service parts replenishments
- Need for multimodal transportation modes
- Limited pool of airlines
- Need for accurate end-to-end visibility
- Damage-free deliveries
- Increasing focus on sustainability
- Reducing fleet of 747 freighters

DHL Global Forwarding's response

- Global network covering all transport modes
- Established relationships with carriers and ground handlers
- Starbroker, the in-house carrier of DHL, providing additional capacity
- State of the art visibility tools
- End-to-end solutions
- Zero-defect mindset
- Certified team of experts

MANAGING HIGH-VALUE CAPITAL EQUIPMENT SHIPMENTS – DHL CAPITAL EQUIPMENT SOLUTION

Supported by our unparalleled global network, our Capital Equipment Competence Center provides end-to-end solutions for your SEMICON shipments needs. Your shipments are in safe hands.

Our CERTIFIED training program guarantees uniformed level of training. By investing in this extensive training program, DHL demonstrates our commitment for delivery excellence as well as the professional development of our employees worldwide.

IN-HOUSE CAPACITY – STARBROKER SOLUTIONS

Starbroker is our in-house carrier. Focusing on network optimization and innovation, it procures additional capacity for DHL and uses the gateway concept to connect focused trade lanes around the world. Through our Starbroker team, we can help you manage your urgent shipment needs, using everything from charters and hand-carry services to multimodal service offerings. You can rely on us to support your growth in new markets and trades.

REASONS TO CHOOSE DHL GLOBAL FORWARDING

FOR ALL YOUR SEMICONDUCTOR SUPPLY CHAIN NEEDS

Your needs

Peace of mind when sending your highly valuable shipments

Solutions tailored to your needs

End-to-end visibility

Guaranteed access to capacity

A strong partner that helps you reduce supply chain scope 3 emissions.

How we deliver

✓ Qualified, trained and certified subject matter experts

✓ Extensive network covering nearly the whole globe

✓ Customized end-to-end solutions

✓ Scalable and agile solutions

✓ myDHLi offering visibility at your fingertips.

✓ Control Tower proactively monitoring your shipment from forecast to pickup to delivery

✓ CapTrack solution offering proactive real-time monitoring of your shipment using IOT devices

✓ Largest network coverage globally:

– Top global air and ocean freight provider

– Additional network and capacity solutions through Starbroker, DGF in-house carrier

– Access to additional capacity within the DHL Group through DHL aviation

✓ Service options for minimizing and/or avoiding logistics-related carbon emissions, waste, and other environmental impacts along your entire supply chain

✓ These solutions present potential for additional savings and have a positive impact on your brand

COMPLEXITY MEETS EXPERTISE: LITHOGRAPHY TOOLS TO TAIWAN

An example of our semiconductor supply chain solutions in action

DHL SEMICONDUCTOR SOLUTIONS: SIMPLIFYING COMPLEXITIES

An industry-leading SEMICON lithography tools manufacturer in the Netherlands needed to deliver large quantity of tools to Taiwan at the end of Q4 to meet their own targets and the targets of their customers. The equipment is packed in containers specifically designed for 747 freighters. Because of the tight timing, combined with the specific need for this type of aircraft, the tools manufacturer could not find an uplift solution that will enable on time delivery to Taiwan.

Our tailor-made uplift solution

Less than a week after receiving the request, the DHL Semicon Competence Center, in cooperation with Starbroker, presented several possible solutions to the customer.

Starbroker immediately secured a charter amid a tight capacity situation, and the shipment was sent via DHL. The DHL Capital Competence center supervised the end-to-end execution flawlessly, from collection, to ULD buildup, to final delivery and the end customer move-in day.

Supporting our partners

Our solution enabled the manufacturer to deliver the tools on time and in perfect condition. The approach we took was based on adding additional capacity to a constrained market. We supported our partner in delivering the equipment on time to our joint customer.



Following disruptions and shortages, the pivotal role of semiconductor technology has been on full display in recent years. Having a robust supply chain setup that can seamlessly adapt to changing demand from your customers and external supply factors is crucial.

Our combination of tried-and-tested as well as uniquely-tailored solutions for all your semiconductor supply chain needs and our team of experienced supply chain experts at DHL Global Forwarding can help make your business resilient, even in the face of unexpected challenges.

**FOR MORE INFORMATION,
CONTACT YOUR
DHL ACCOUNT MANAGER**

or visit us on [dhl.com](https://www.dhl.com)

