

SUSTAINABILITY @ DHL

Excellence. Simply delivered. In a sustainable way.



SUSTAINABILITY IN FIGURES

>300 aircraft

118,500 vehicles of which

29,200 e-vehicles

27,100 bicycles of which

13,500 e-trikes

36.5 million tonnes CO₂e footprint

600,000 employees globally

4,900 apprentices and trainees

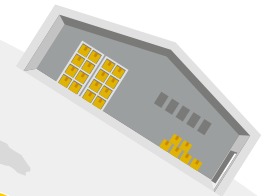
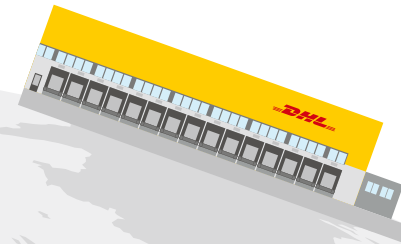
EUR 26 bn in staff costs

220 countries and territories

12,500 locations

3 international hubs in Leipzig (DE), Cincinnati (US) and Singapore

1 Headquarters in Bonn, Germany



STRONG STRATEGIES, SUSTAINABLE MEASURES

Unlocking
our **Potential**
STRATEGY 2015



- 2003** ESG reporting launched
- 2006** UN Global Compact signed Code of Conduct introduced
- 2008** Supplier Code of Conduct introduced GO programs launched



STRATEGY 2020

Focus. Connect. Grow.

- 2015** Certified training program to communicate strategy, corporate culture and values
- 2016** UN Sustainable Development Goals (SDGs) taken into account
- 2017** Climate protection target set: Net zero greenhouse gas emissions by 2050



STRATEGY 2025

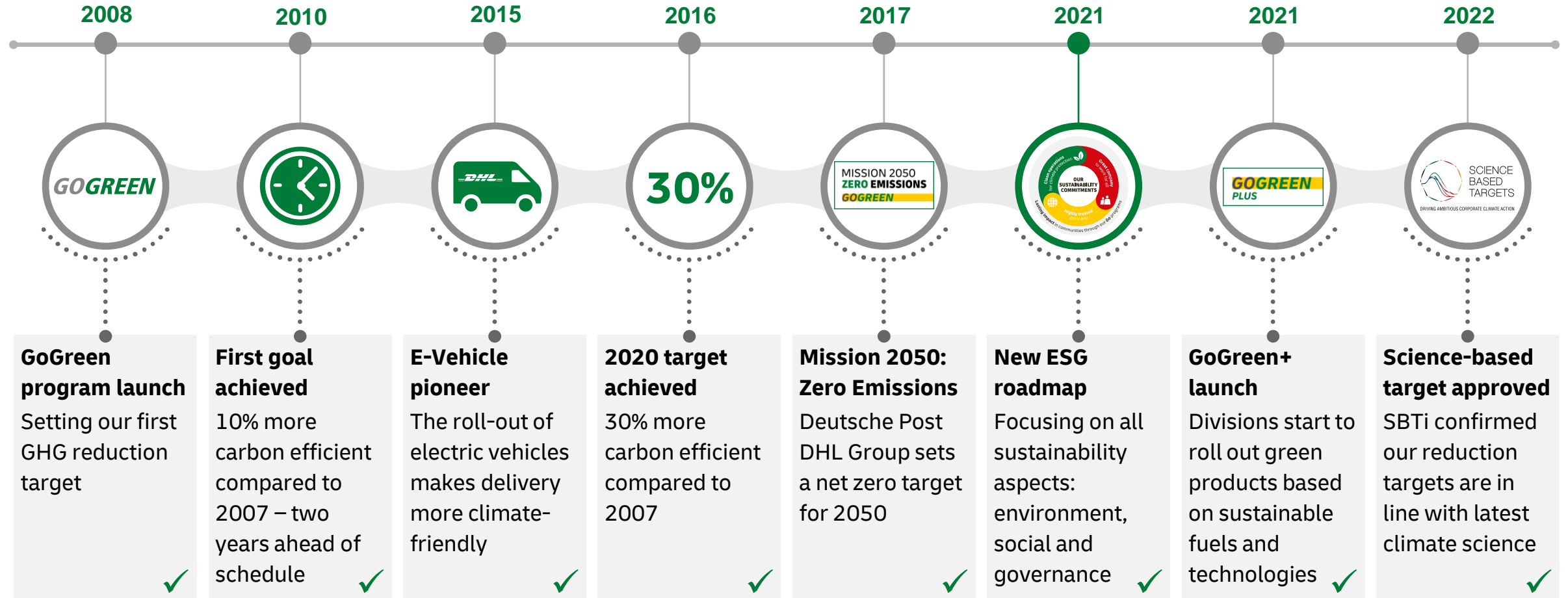
**Delivering excellence
in a digital world**

- 2019** Long-term, sustainability-focused value creation
- 2021** **ESG Roadmap:**
New climate protection goals set, full integration of ESG KPIs into our finance systems, ESG KPIs to be incorporated into our remuneration policies



We have been focused on environmental sustainability for many years

TIMELINE OF ENVIRONMENTAL SUSTAINABILITY @ DHL GROUP



Climate-protection products – “GoGreen Plus” products are based on true decarbonization measures rather than compensation

OVERVIEW SUSTAINABLE PRODUCTS & SOLUTIONS



Transparency: Carbon Reports

Transparency and visibility for our customers via tailored Carbon Reports and interactive Dashboards



Green Optimization

Reduced carbon emissions with optimized supply chain design and energy efficient technology



Clean Fuels & Technology

Decarbonization of logistics services by using sustainable fuels and low carbon technologies



Insetting via GoGreen Plus products

Insetting enables us to directly replace fossil fuels with sustainable biofuels. We thereby protect the environment and the climate along our own supply chain.



Air Freight



Ocean Freight



Road Freight

Solutions for dedicated local operations



Warehousing Solutions




















Dedicated Transport

A broad range of GoGreen Plus products for our business customers is available across our divisions

SUSTAINABLE PRODUCTS & SOLUTIONS BY DIVISION

Standardized, readily available products & solutions

POST & PARCEL	EXPRESS	GLOBAL FORWARDING	FREIGHT	SUPPLY CHAIN	eCOMMERCE
Parcel  <ul style="list-style-type: none"> Optional Service Insetting¹⁾ 100% CO₂e reduction 	TDI (Large Accts)  <ul style="list-style-type: none"> Optional Service Insetting (SAF) Flexible CO₂e reduction ACS Offering 	Air  <ul style="list-style-type: none"> Optional Service Insetting (SAF) Flexible CO₂e reduction 	EuroConnect  EuRapid  EuroLine  <ul style="list-style-type: none"> Optional Service Insetting (Sust. Fuel) 100% CO₂e reduction 	Warehousing  <ul style="list-style-type: none"> Optional Solution: Carbon-neutral WH Two reduction levels 1. >75%, 2. 100% 	Parcel  <ul style="list-style-type: none"> NL: 100% green last mile >95k access points as choice (up to 30% reduction)
Mail²⁾  <ul style="list-style-type: none"> Optional Service Insetting¹⁾ 100% CO₂e reduction 	TDI (Reg. Accts)  <ul style="list-style-type: none"> Optional Service Insetting (SAF) 30% CO₂e reduction ACS Offering 	Ocean LCL  <ul style="list-style-type: none"> Included Service Insetting (SMF) 100% CO₂e reduction 		Transport  <ul style="list-style-type: none"> Optional Low & zero carbon transport solutions Two reduction levels 1. >50%-70%/Sust. Fuel, 2. 100%/EVs 	Transport  <ul style="list-style-type: none"> Optional Solutions Using Sust. Fuel for pick up or line haul Up to 100% reduction
Hybrid Letter  <ul style="list-style-type: none"> Included Service Insetting¹⁾ 100% CO₂e reduction 	TDI (myDHL+)  <ul style="list-style-type: none"> Optional Service Booked in MyDHL+ Insetting (SAF) 	Ocean FCL  <ul style="list-style-type: none"> Optional Service Insetting (SMF) Flexible CO₂e reduction 	Skicka Grönt  <ul style="list-style-type: none"> Optional Service in SE Insetting³⁾ 100% CO₂e reduction 		

+ Customer specific, strategic and collaborative solutions using decarbonized processes (“clean process”)

1) e.g., sustainable fuels, heat pumps, electric vehicles; 2) incl. Mail Communication, Dialogue Marketing and Press Service; 3) e.g., sustainable fuels, climate smart vehicles



DHL Group commitments to reduce Carbon Footprint until 2030

Target 2030:

<29m
tonnes CO₂e



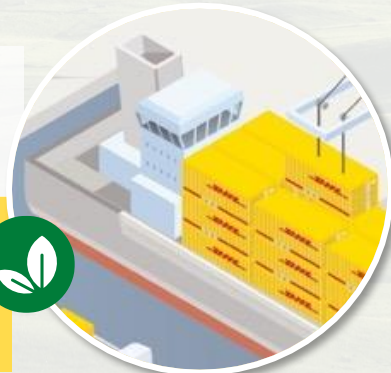
Sustainable Aviation Fuels

- Blending ratio of **>30% SAF** by 2030



Carbon neutral buildings

- Starting in 2021, **all new** (owned) buildings built to be **climate neutral**



Sustainable Marine Fuels

- Sustainable Maritime **Fuel blending**

Green last-mile delivery

- **Electrify 60% of last-mile delivery** vehicles by 2030





BY 2050

DESIGNING CLIMATE-NEUTRAL LOGISTICS

By 2050 we want to reduce all logistics-related greenhouse gas emissions¹⁾ to net zero, including those of our suppliers and subcontractors.

REDUCE **GHG EMISSIONS**
TO NET ZERO²⁾

39
m tonnes CO₂e

0

2021

2050

1) Basis for GHG emissions calculation (well-to-wheel): Greenhouse Gas Protocol, DIN EN 16258 and the Global Logistics Emissions Council Framework.; 2) Schematic representation. Reduction to unavoidable minimum, which is to be fully compensated for by recognized countermeasures (without offsetting).



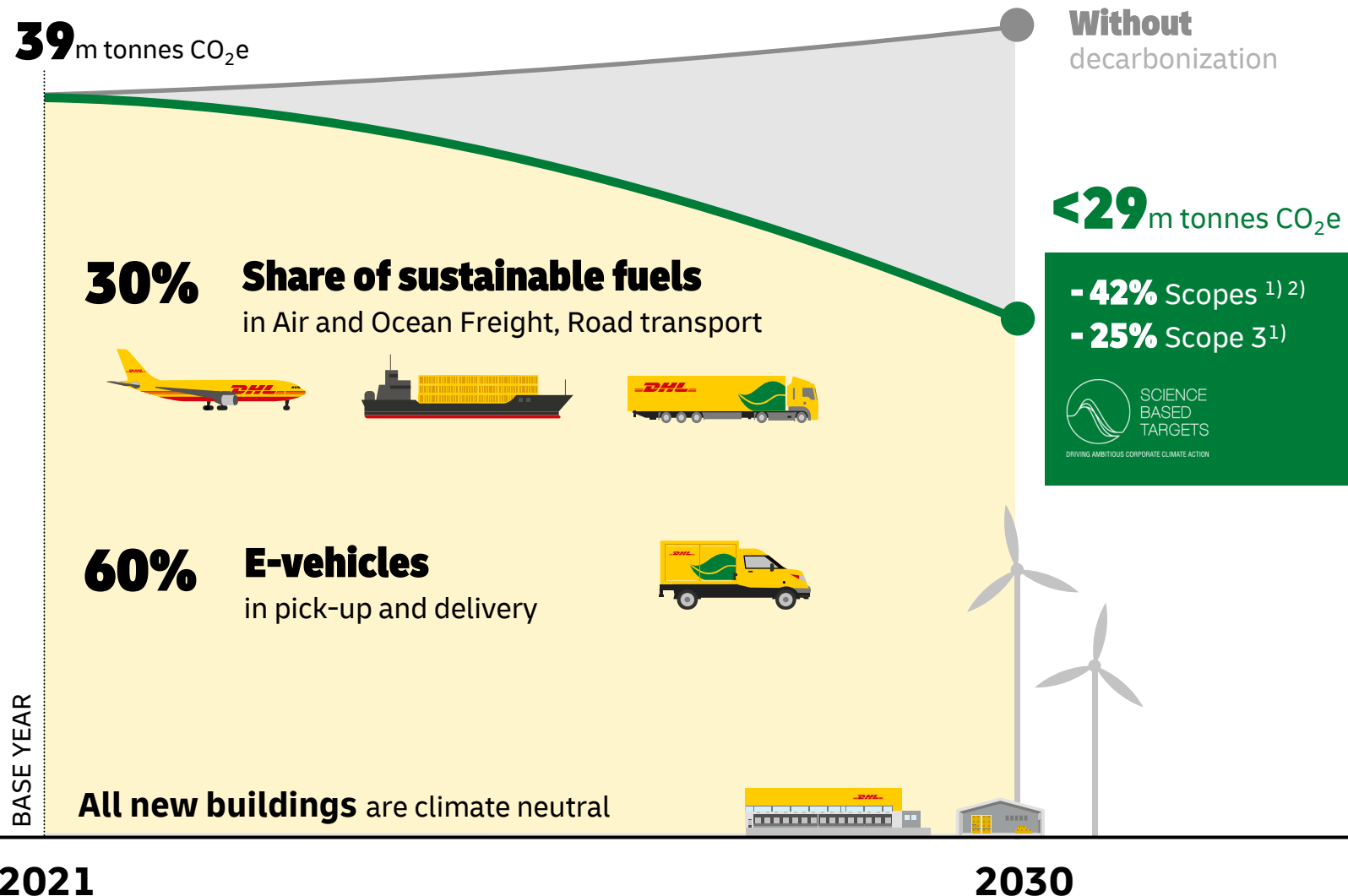


BY 2030

REDUCE GHG EMISSIONS TO <29 MILLION TONNES

By 2030, we want to reduce direct and indirect emissions (Scopes 1 and 2) by 42% and logistics-related¹⁾ Scope 3 emissions by 25% in total.

Decarbonization measures and targets (schematic representation)



2) Logistics-related GHG categories; 3) (Upstream fuel and energy); 4) (Upstream transport and distribution); 6; (Business travel)

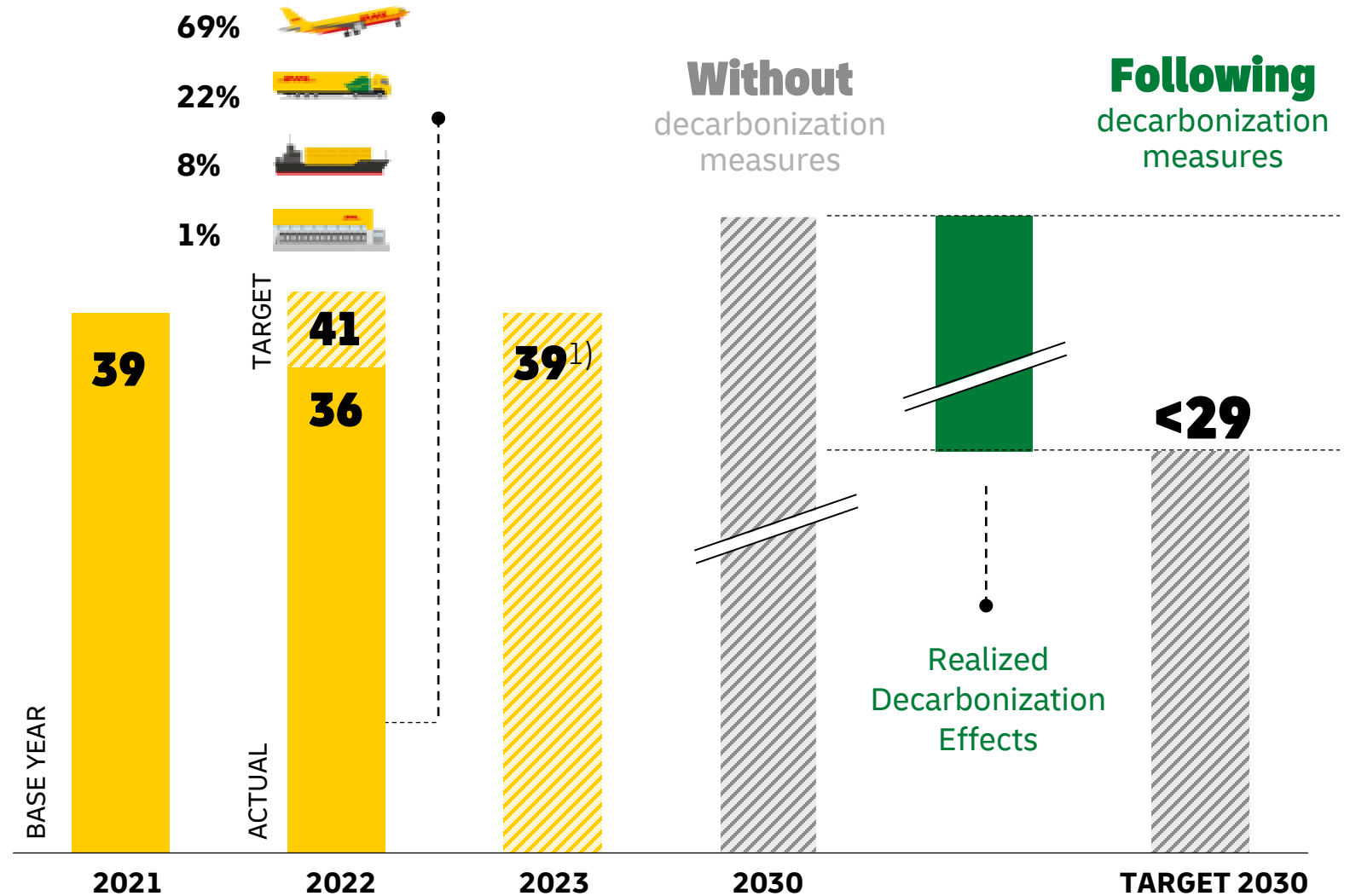


BY 2030

OUR PATH TO THE TARGET

With additional expenditure for sustainable fuels and technologies, we will significantly reduce the rise in GHG emissions by 2030.

GHG emissions (m tonnes CO₂e)



1) If transport volumes undergo weaker development, we expect GHG emissions to remain approximately at the prior-year level; if the economy proves to be more dynamic, we aim to limit GHG emissions to a maximum of 39mn tonnes of CO₂e.