

OCEAN FREIGHT PORT SITUATION UPDATE

APRIL 2025

Status as at 10 April 2025

This document is designed to provide you with region-specific updates. Simply select your regional cluster from the menu to gain insights into the current state its individual ports.

Our goal is to equip you with essential information, fostering informed decision-making and effective logistics planning. Stay ahead, stay informed.

DHL Global Forwarding – Excellence. Simply Delivered.



AMERICAS

[US & Canada WC](#)

[US & Canada EC](#)

[US Gulf](#)

[Mexico](#)

[CENAC](#)

[LATAM](#)

EUROPE

[North Continent](#)

[United Kingdom](#)

[Mediterranean](#)

MIDDLE EAST & AFRICA

[East Mediterranean](#)

[Atlantic](#)

[Gulf & Indian Ocean](#)

ASIA-PACIFIC

[China](#)

[North-East Asia](#)

[South-East Asia](#)

[Oceania](#)

OCEAN FREIGHT PORT SITUATION UPDATE

AMERICAS



Halifax - Vessels continue to arrive in Halifax off proforma, primarily due to weather over the North Atlantic. Hapag-Lloyd import ground count is low and rail dwell times are presently 7.8 days.

Saint John (CASJB) - Vessels arriving in Saint John are experiencing minor delays due to severe weather in the North Atlantic. Once alongside, productivity is inconsistent due to continued disruptions related to mechanical issues with the gantry cranes. Terminal utilization has stabilized and is presently moderate at 51%. Import rail dwell times are also high at 8 days but rail car supply is improving and will remain consistent for the next week. Dwell times are expected to reduce to 3.5 days by end of March.

Montreal - Yard utilization is low at 48%. Vessel productivity is strong and winter navigation restrictions have been lifted as the weather continues to improve. Current rail dwell is 3.3 days as rail car supply remains consistent and is expected to continue as such for the next 7-14 days.

AMERICAS

US & CANADA WC



PRINCE RUPERT

- 5+ days delay
- Medium shortages
- Medium road issues
- Terminal berth length delay

VANCOUVER

- 5+ days delay
- Medium shortages
- Medium road issues
- Terminal berth length delay

SEA TAC

- 5+ days delay
- Equipment available
- No hinterland issue
- No other issue

OAKLAND

- 2-5 days delay
- Equipment available
- No hinterland issue
- No other issue

LA/LONG BEACH

- 2-5 days delay
- Equipment available
- No hinterland issue
- Long Dwell Times 3-7 days



AMERICAS US GULF



HOUSTON

- 2-5 days delay
- Equipment available
- No hinterland issue
- Import dwell time 2 days

MOBILE

- No delay
- Equipment available
- No hinterland issue
- No other issue

JACKSONVILLE

- No delay
- Equipment available
- No hinterland issue
- No other issue

PT. EVERGLADES

- 1-2 days delay
- Equipment available
- No hinterland issue
- No other issue

MIAMI

- 2-5 days delay
- Equipment available
- No hinterland issue
- No other issue

NEW ORLEANS

- No delay
- Equipment available
- No hinterland issue
- No other issue

TAMPA

- No delay
- Equipment available
- No hinterland issue
- No other issue

MX

GT

HN

**ENSENADA**

- 1-2 days delay
- Equipment available
- No hinterland issue
- Forecast w/4 wks in advanced is needed

LÁZARO CÁRDENAS

- 2-5 days delay
- Equipment available
- Major road issues
- Forecast w/4 wks in advanced is needed

MANZANILLO

- 2-5 days delay
- Minor shortages
- Medium road issues
- Forecast w/4 wks in advanced is needed

ALTAMIRA

- 1-2 days delay
- Minor shortages
- No hinterland issue
- Anticipated planning is needed

VERACRUZ

- 2-5 days delay
- Minor shortages
- Minor road issues
- Port ops impacted due to bad weather



PT. QUEZAL

- 5+ days delay
- Equipment available
- No hinterland issue
- No other issue

ACAJUTLA

- 5+ days delay
- Medium shortages
- No hinterland issue
- No other issue

CALDERA

- 5+ days delay
- Equipment available
- Major road issues
- Some carriers made cut and runs

PUERTO CORTES

- Up to 1 day delay
- Equipment available
- No hinterland issue
- No other issue

PUERTO LIMON

- No delay
- Equipment available
- No hinterland issue
- No other issue

MANZANILLO

- 5+ days delay
- Equipment available
- No hinterland issue
- Stop booking due to high port congestion

RODMAN

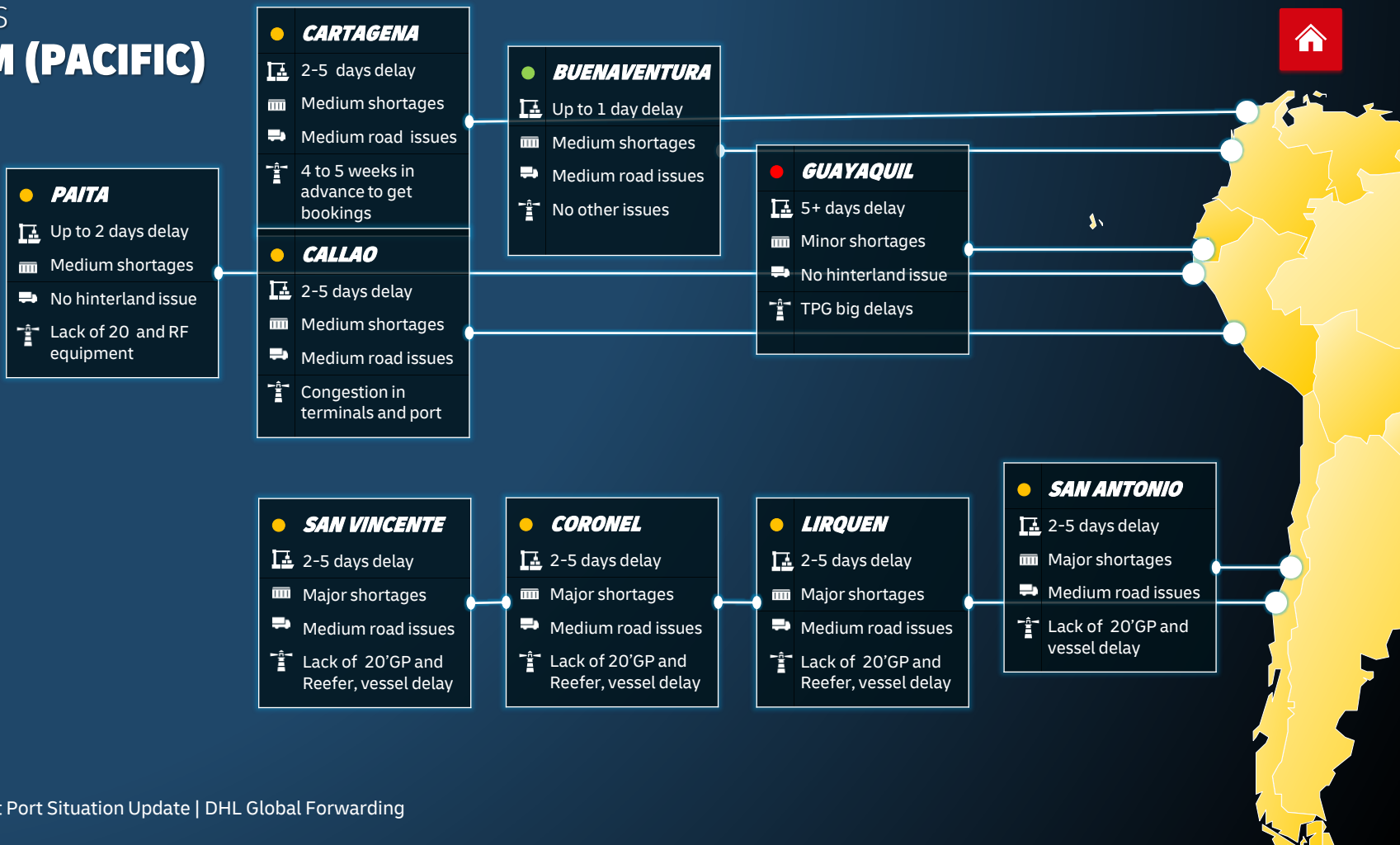
- 1-2 days delay
- Equipment available
- No hinterland issue
- Roll over, port congestion possible

CRISTOBAL

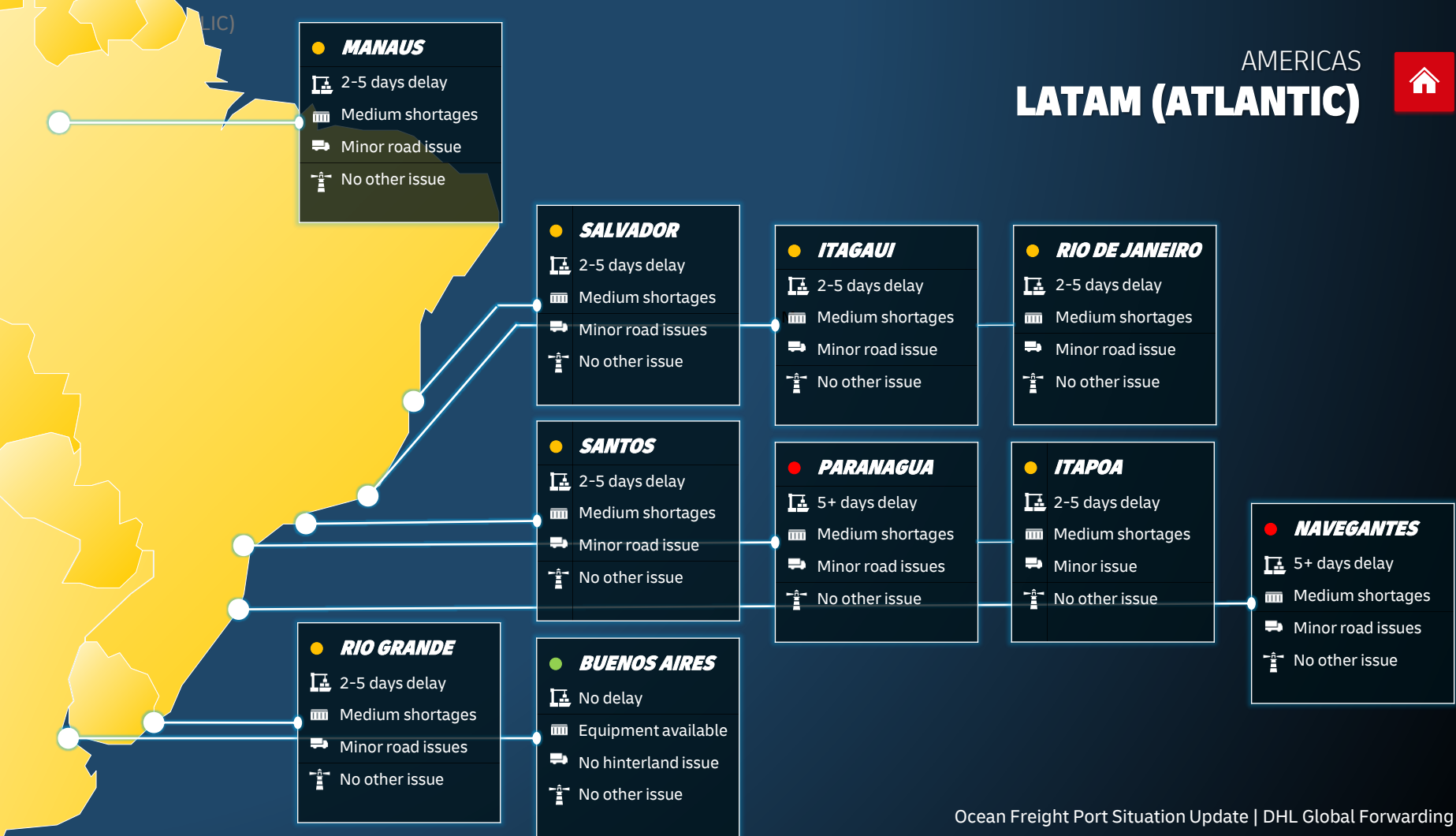
- 1-2 days delay
- Equipment available
- No hinterland issue
- Roll over, port congestion possible

AMERICAS

LATAM (PACIFIC)



AMERICAS LATAM (ATLANTIC)



OCEAN FREIGHT PORT SITUATION UPDATE

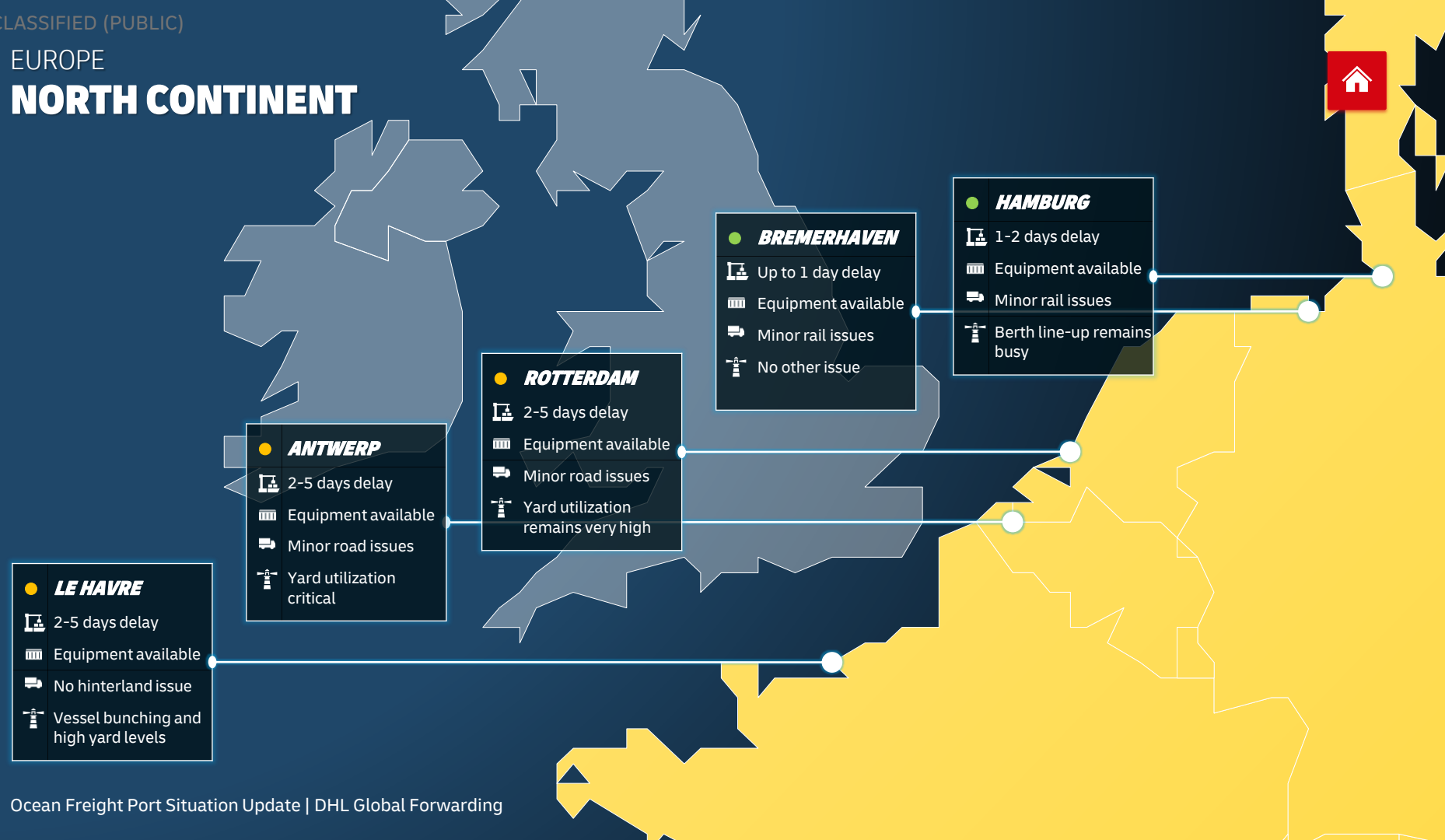
EUROPE

European ports are currently experiencing congestion and delays due to factors like network adjustments, high volumes, and off-schedule vessel arrivals. Critically low water levels on the River Rhine are causing limitations in barge capacity for inland services to/from Antwerp and Rotterdam.

France – Labor action, previously announced for April, is currently suspended. This potentially results in some productivity improvements and also leads to some relief in other European ports which compensated volumes due to vessel diversion.

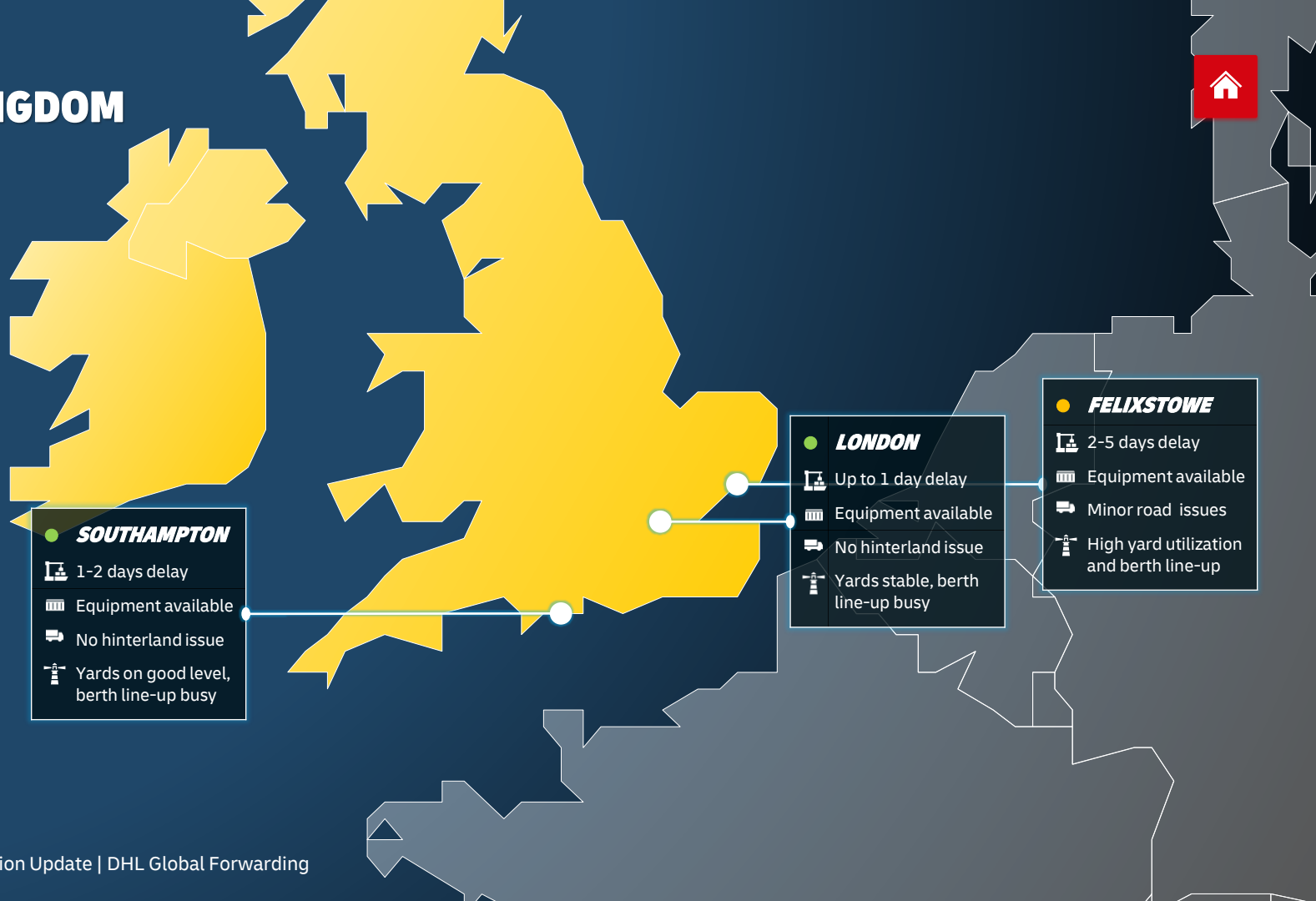
EUROPE

NORTH CONTINENT



EUROPE

UNITED KINGDOM



EUROPE MEDITERRANEAN



● **SINES**

- 1-2 days delay
- Equipment available
- No hinterland issue
- Busy vessel line-up

● **GENOA**

- 2-5 days delay
- Equipment available
- Minor road issues
- High yard levels and busy line-up

● **FOS-SUR-MER**

- 1-2 days delay
- Equipment available
- No hinterland issue
- Vessel waiting time slightly increasing

● **ALGECIRAS**

- 1-2 days delay
- Equipment available
- Minor road issues
- No other issue

● **PIRAEUS**

- 5+ days delay
- Equipment available
- No hinterland issue
- Terminal congestion and vessel bunching

UNCLASSIFIED (PUBLIC)

OCEAN FREIGHT PORT SITUATION UPDATE

MIDDLE EAST & AFRICA

MIDDLE EAST & AFRICA

EAST MEDITERRANEAN



CASABLANCA

- 5+ days delay
- Major shortages
- No hinterland issue
- No other issue

ALGIERS

- 5+ days delay
- Major shortages
- No hinterland issue
- No other issue

ISTANBUL

- 1-2 days delay
- Equipment available
- No hinterland issue
- No other issue

HAIFA

- 1-2 days delay
- Equipment available
- No hinterland issue
- DG restrictions in place

ASHDOD

- 1-2 days delay
- Equipment available
- No hinterland issue
- DG restrictions in place

ALEXANDRIA

- 1-2 days delay
- Equipment available
- No hinterland issue
- No other issue

MIDDLE EAST & AFRICA

ATLANTIC

| | |
|----|--------------------------|
| ● | APAPA |
| 🚢 | 1-2 days delay |
| 🏗️ | Medium shortages |
| 🚚 | No hinterland issue |
| 🚦 | High level of congestion |

| | |
|----|---------------------|
| ● | TEMA |
| 🚢 | Up to 1 day delay |
| 🏗️ | Equipment available |
| 🚚 | No hinterland issue |
| 🚦 | No other issue |

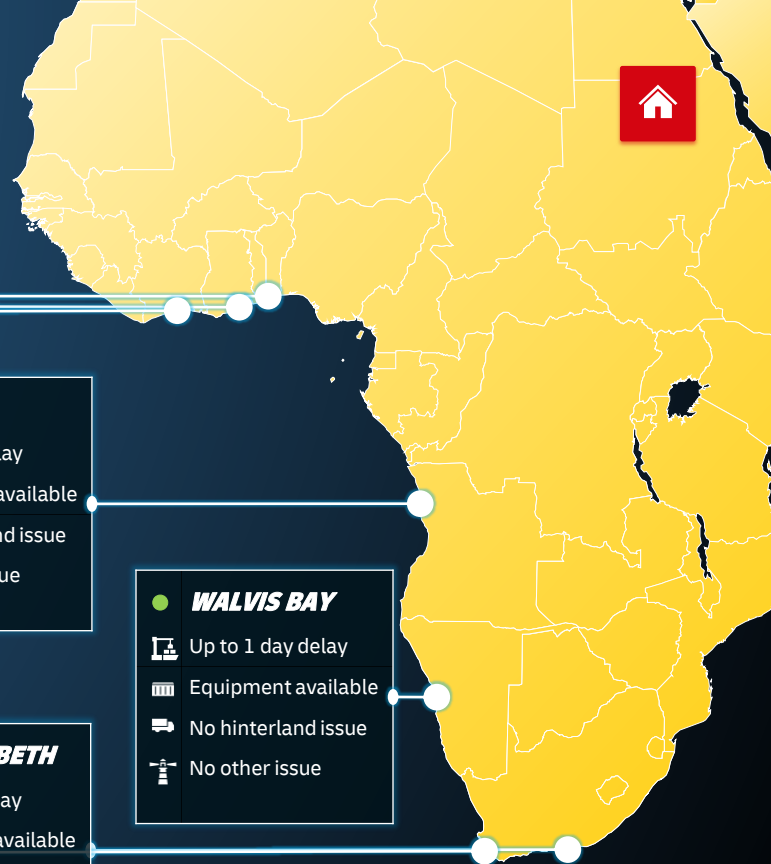
| | |
|----|---------------------|
| ● | ABIDJAN |
| 🚢 | Up to 1 day delay |
| 🏗️ | Equipment available |
| 🚚 | No hinterland issue |
| 🚦 | No other issue |

| | |
|----|---------------------|
| ● | LUANDA |
| 🚢 | 2-5 days delay |
| 🏗️ | Equipment available |
| 🚚 | No hinterland issue |
| 🚦 | No other issue |

| | |
|----|---------------------|
| ● | WALVIS BAY |
| 🚢 | Up to 1 day delay |
| 🏗️ | Equipment available |
| 🚚 | No hinterland issue |
| 🚦 | No other issue |

| | |
|----|----------------------------|
| ● | CAPE TOWN |
| 🚢 | 5+ days delay |
| 🏗️ | Medium shortages |
| 🚚 | No hinterland issue |
| 🚦 | Wind issues, vessel delays |

| | |
|----|--------------------------------|
| ● | PT. ELIZABETH |
| 🚢 | 1-2 days delay |
| 🏗️ | Equipment available |
| 🚚 | No hinterland issues |
| 🚦 | Avoid rail to JNB, wind issues |



MIDDLE EAST & AFRICA

GULF & INDIAN OCEAN



JEBEL ALI

- 1-2 days delay
- Equipment available
- No hinterland issue
- No other issue

DAMMAM

- 1-2 days delay
- Minor shortages
- No hinterland issue
- No other issue

MOMBASA

- 2-5 days delay
- Medium shortages
- No hinterland issue
- No other issue

DAR ES SALAAM

- 1-2 days delay
- Medium shortages
- No hinterland issue
- No other issue

MAPUTO

- Up to 1 day delay
- Equipment available
- No hinterland issue
- No other issue

DURBAN

- 1-2 days delay
- Equipment available
- No hinterland issue
- Rail is an option, but delays may occur

PORT LOUIS

- Up to 1 day delay
- Equipment available
- No hinterland issue
- No other issue

UNCLASSIFIED (PUBLIC)

OCEAN FREIGHT PORT SITUATION UPDATE

ASIA-PACIFIC



● **QINGDAO**

- Up to 1 day delay
- Equipment available
- No hinterland issue
- 1 berth impacted due to dredging

● **SHANGHAI WGQ**

- 2-5 days delay
- Equipment available
- No hinterland issue
- Delay expected due to port congestion

● **SHANGHAI YS**

- 1-2 days delay
- Equipment available
- No hinterland issue
- Delay expected due to port congestion

● **NINGBO**

- 1-2 days delay
- No equipment issue
- No hinterland issue
- Delay expected due to port congestion

● **HONG KONG**

- No delay
- Equipment available
- No hinterland issue
- No other issue

● **SHEKOU**

- No delay
- Equipment available
- No hinterland issue
- No other issue

● **YANTIAN**

- No delay
- Equipment available
- No hinterland issue
- No other issue

ASIA-PACIFIC
NORTH-EAST ASIA



● **BUSAN**

- 🚢 No delay
- 🚚 Equipment available
- 🚚 No hinterland issue
- 🚚 Delay anticipated week 15

● **OSAKA**

- 🚢 No delay
- 🚚 Equipment available
- 🚚 No hinterland issue
- 🚚 No other issue

● **TOKYO**

- 🚢 No delay
- 🚚 Equipment available
- 🚚 No hinterland issue
- 🚚 No other issue

● **KEELUNG**

- 🚢 No delay
- 🚚 Equipment available
- 🚚 No hinterland issue
- 🚚 No other issue

● **KAOSHIUNG**

- 🚢 No delay
- 🚚 Equipment available
- 🚚 No hinterland issue
- 🚚 No other issue



SOUTH-EAST ASIA & SUBCONTINENT

MUNDRA

- No delay
- Equipment available
- No hinterland issue
- No other issue

NHAVA SHEVA

- No delay
- Equipment available
- No hinterland issue
- No other issue

CHENNAI

- No delay
- Equipment available
- No hinterland issue
- No other issue

CHATTOGRAM

- 2-5 days delay
- Equipment available
- No hinterland issue
- Berthing backlog from Ramadan

PORT KLANG

- 2-5 days delay
- Equipment available
- No hinterland issue
- Vessel bunching

JAKARTA

- No delay
- Equipment available
- No hinterland issue
- No other issue

MANILA

- 1-2 days delay
- Equipment available
- No hinterland issue
- Longer waiting for off window vessel

SINGAPORE

- 1-2 days delay
- Equipment available
- No hinterland issue
- No other issue

ASIA PACIFIC OCEANIA

