

# PALLET FOCUS

## INDOOR ROBOTIC TRANSPORT

Indoor Robotic Transport boosts labor efficiency and consistency by autonomously transporting pallets in the warehouse working safely alongside humans, reducing damage and providing new data analytics possibilities.



### HIGHLIGHTS OF THE TECHNOLOGY

#### Features:



Autonomously transports pallets from point-to-point



Works safely alongside operators



Helps with picking and put-away productivity



Complements manually operated forklifts

#### Benefits:



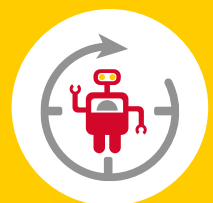
Boosts labor efficiency



Reduces the total distance travelled by operators



24/7 working time



1 robot can save 3-4h on traveling time per 8h shift



Operators are able to focus on more value-adding tasks